

Feathermill

METRIC

FACE MILL DSG45-5 Type

- Original high positive cutter with adjustable mechanism.
- High axial rake angle and wide chip pocket create excellent chip ejection.

Entering Angle : 45°	A.R. : +30°
	R.R. : -2° ~ -4°
Max. D.O.C.	5mm



Fig. 1

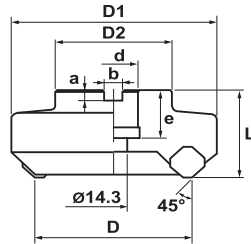


Fig. 2

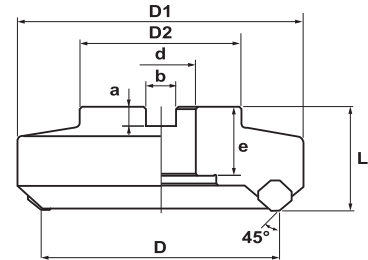


Fig. 3

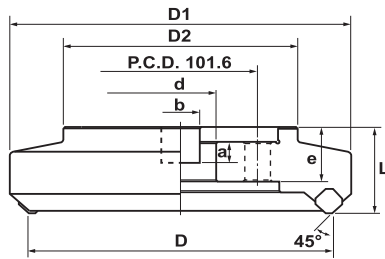
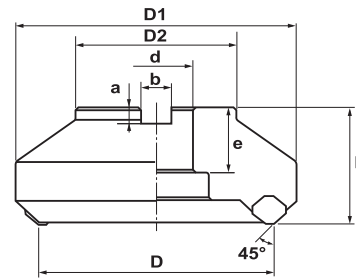


Fig. 4



Specifications

CATALOG NUMBER	STK	DIMENSIONS								FIG.	INSERT	Q	PARTS		
		D	D1	L	d	D2	a	b	e				Screw	Wrench	Wedge
DSG45-5080R	•	80	105	44	25.4	60	6	9.5	24	1	SGHN1504AZN-44 SGHN1504AZR-F1 SGLN1504AZN-44	4	LS-180	T-27	80808-5
DSG45-5100R	•	100	125	50	31.75	70	8	12.7	32	2		5			
DSG45-5125R	•	125	150	54	38.1	85	10	15.9	36	2		6			
DSG45-5160R	•	160	187	56	50.8	100	11	19	37	2		8			
DSG45-5200R	•	200	225	56	47.625	154	14.3	25.4	34.5	3		10			

Note: All cutters are supplied without inserts.

Specifications

CATALOG NUMBER	STK	DIMENSIONS								FIG.	INSERT	Q	PARTS		
		D	D1	L	d	D2	a	b	e				Screw	Wrench	Wedge
DSG45-5100-32R	•	100	125	50	32	70	8	14.4	32	4	SGHN1504AZN-44 SGHN1504AZR-F1 SGLN1504AZN-44	5	LS-180	T-27	80808-5
DSG45-5125-40R	•	125	150	63	40	50	9	16.4	35	4		6			
DSG45-5200-60R	•	200	225	63	60	154	14	25.7	32	3		10			

Note: All cutters are supplied without inserts.

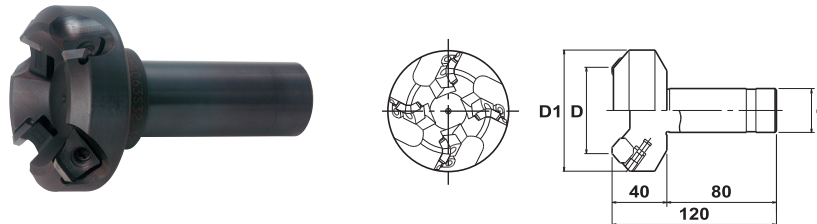


METRIC

Feathermill

END MILL DSG45-5 Type

Entering Angle : 45°	A.R. : +30°
	R.R. : -2° ~ -4°
Max. D.O.C.	5mm

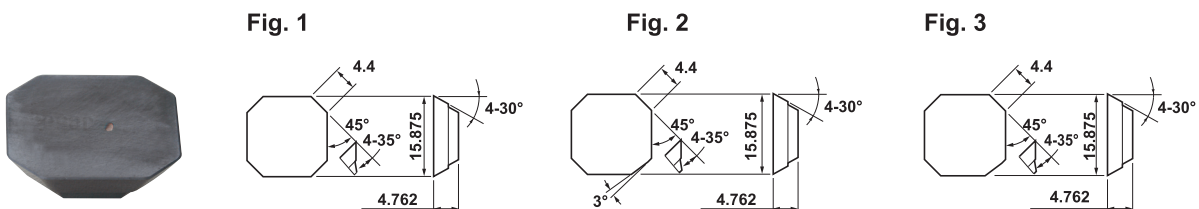


Specifications

CATALOG NUMBER	STK	DIMENSIONS			INSERT	Q	PARTS		
		D	D1	d			Screw	Wrench	Wedge
DSG45-5050S32	•	50	75	32	SGHN1504AZN-44 SGHN1504AZR-F1 SGLN1504AZN-44	4	LS-180	T-27	80808-5
DSG45-5050S42	•	50	75	42		4			
DSG45-5063S32	•	63	88	32		4			
DSG44-5063S42	•	63	88	42		4			

Note: All cutters are supplied without inserts.

INSERTS



Specifications - Metric

CATALOG NUMBER	DIMENSIONS			FIG.	COATED				CERMET	UNCOATED
	IC	T	IC TOLERANCE		JC5030	JC610	JC5040	JC730U	CX90	KT9
SGHN1504AZN-44	15.875	4.762	H	1	•	•	•	•	•	•
SGHN1504AZR-F1	15.875	4.762	H	2	•	•			•	
SGLN1504AZN-44	15.875	4.762	L	3	•					

Recommended Cutting Data

WORK MATERIALS	INSERT GRADE	Vc (m/min)	fz (mm/tooth)
Carbon Steel & Alloy Steel (180-280HB)	JC5030, JC5040, JC730U, CX90	180 - 300	0.2 - 0.5
Stainless Steel (~270HB)	JC5040, JC730U, CX90	120 - 220	0.2 - 0.3
Cast Iron (200-250HB)	JC610	150 - 250	0.2 - 0.4
Aluminum Alloy	KT9	300 - 800	0.2 - 0.5