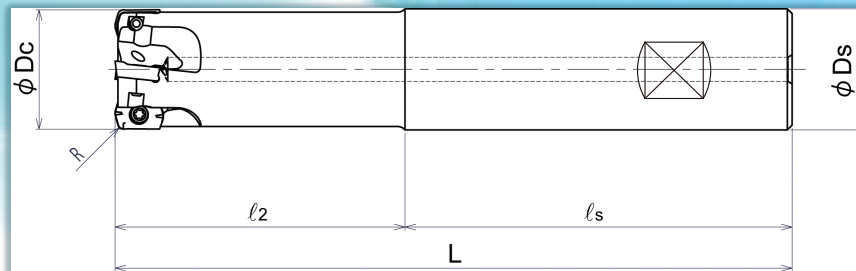


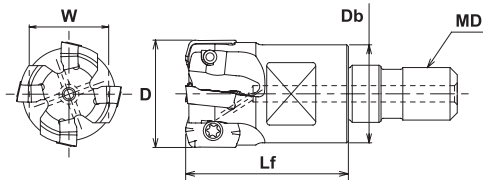
QM Max

End Mills, Modular Heads & Face Mill

QXPS Style



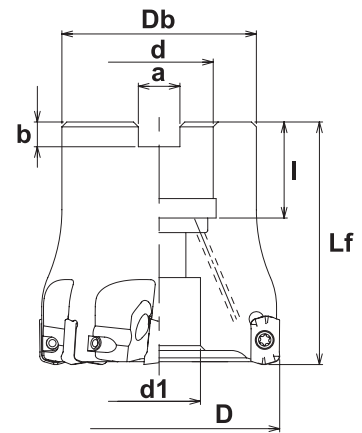
CATALOG NUMBER	Dc	l2	L	Ds
QXPS-3075-2.0-S075NP	.750	2.00	5.00	.750
QXPS-3075-3.0-S075NP	.750	3.00	6.25	.750
QXPS-4100-2.0-S100NP	1.00	2.00	7.00	1.00
QXPS-4100-3.0-S100NP	1.00	3.00	8.00	1.00
QXPS-5125-3.0-S125NP	1.25	3.00	5.50	1.25
QXPS-5125-4.75-S125NP	1.25	4.75	8.00	1.25
QXPS-6150-3.0-S125NP	1.50	3.00	5.50	1.25
QXPS-6150-4.75-S125NP	1.50	4.75	8.00	1.25



MQX Style



QXP Style



CATALOG NUMBER	DIMENSIONS									INSERT	Q	PARTS	
	D	Lf	Db	d	d1	a	b	l	MD			Screw	Wrench
MQX-3075-M10	.750	1.18	.708	-	-	-	-	-	M10	EPM*100312Z*R EPHW100316ZTR ZPMT1003**ZER YPHW1003*ZER-*	3	TSW-2556H	T-08
MQX-5100-M12	1.00	1.38	.890	-	-	-	-	-	M12		5	DSW-2563H	T-08
MQX-5125-M16	1.25	1.69	1.14	-	-	-	-	-	M16		5	DSW-2563H	T-08
QXP-8200R-075	2.00	2.00	1.77	.750	.63	.319	.197	.75			8	DSW-2563H	T-08

Note: All cutters supplied without inserts.

METRIC SIZES ALSO AVAILABLE!

QM Max Inserts

High Feed Inserts
(EPMT100312ZER)



JC5118
JC8050



JC7560

High Feed Insert for unfavorable conditions
(EPMW100312ZER)



JC5118
JC8050

High Feed Inserts for unfavorable conditions
(EPMW100312ZTR)



JC5118
JC8050



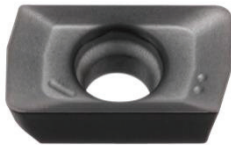
JC7560

High Hardened Steel
(EPHW100316ZTR)



DH102

Shoulder Inserts
(ZPMT100304ZER)
(ZPMT100308ZER)
(ZPMT100320ZER)



JC5118
JC8050

Shoulder Insert
From semi-finishing to finishing side & bottom
(ZPMT100308ZER-PL)



JC8015
DH102
CX75

Shoulder Insert for Aluminum Alloy
(ZPMT100308ZER-NL)



“Mirror Insert” for finishing side & bottom face (YPHW100308ZER-F)
(YPHW100308ZER-15)



-F JC8015
-15 DH102
-15 CX75

“Mirror Insert” for finishing Side & bottom face and contouring
(YPHW100320ZER-24)



DH102
JC8015

CBN
(YPHW100320ZTR-F1)



Recommended starting speeds & feeds for regular length tools

****NOTE: Corner radius for prograning is .059”**

Material	SFM	IPT	DOC
Cast Iron	600	.025” / .030”	.030” / .035”
Tool Steel	450	.025” / .030”	.025” / .035”
Stainless Steel	350	.020” / .025”	.020” / .025”

NOTE: Call for application support on materials not listed and finishing.