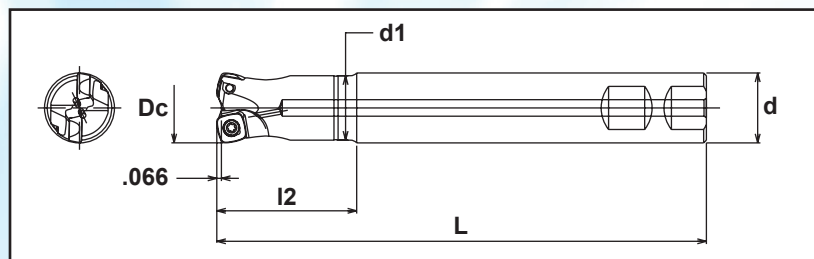


# New High Feed SKG Series - 10mm insert



**End Mill**

## Specifications

CATALOG NUMBER	DIMENSIONS					INSERT	Q	PARTS	
	Dc	d1	I2	L	d			Screw	Wrench
SKGS-2100-2.0-10-S100NP	1.00	.921	2.0	7.00	1.00	SPNW100415ZTR JC8050 or JC8118P	2	TSW-3509H	T-15
SKGS-2100-3.0-10-S100NP	1.00	.921	3.0	8.00	1.00		2		
SKGS-3125-2.0-10-S125NP	1.25	1.14	2.0	7.00	1.25		3		
SKGS-3125-3.0-10-S125NP	1.25	1.14	3.0	8.00	1.25		3		

## Recommended starting speeds & feeds for regular length tools

**\*\*NOTE: Corner radius for programming is .118"**

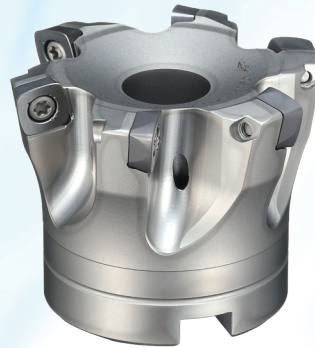
Material	SFM	IPT	DOC	DOC (Max)
Cast Iron	600	.050" / .070"	.060"	.060"
Tool Steel	450	.040" / .060"	.030" / .050"	.060"
Stainless Steel	300	.030" / .050"	.030" / .050"	.060"

**NOTE: Call for application support on hardened materials and finishing.  
All cutters supplied without inserts.**

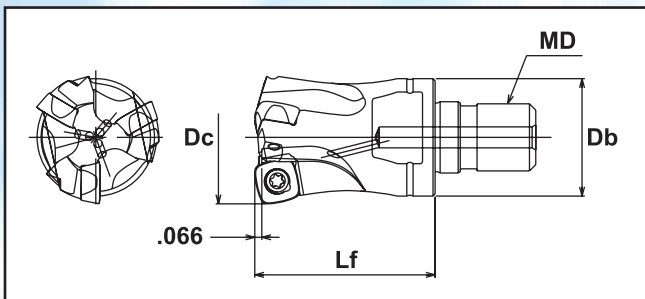
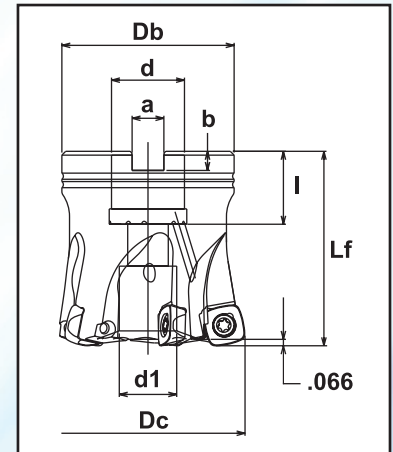
# New High Feed SKG Series - 10mm insert



Modular Head



Face Mill



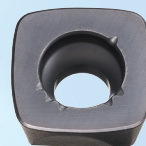
## Specifications

CATALOG NUMBER	DIMENSIONS									INSERT	Q	PARTS	
	Dc	Lf	Db	d	d1	a	b	l	MD			Screw	Wrench
SKG-5200R-075-10	2.00	2.00	1.77	.750	.590	.319	.197	.750	-	SPNW100415ZTR JC8050 or JC8118P	5	TSW-3509H	T-15
SKG-6250R-075-10	2.50	2.00	1.89	.750	.669	.319	.197	.750	-		6		
SKG-7300R-100-10	3.00	2.00	2.21	1.00	.787	.374	.236	.866	-		7		
SKG-7300R-125-10	3.00	2.00	2.67	1.25	1.02	.500	.315	.866	-		7		
MSG-2100-10-M12	1.00	1.38	.905	-	-	-	-	-	M12		2		
MSG-3125-10-M16	1.25	1.69	1.10	-	-	-	-	-	M16		3		
MSG-3150-10-M16	1.50	1.69	1.25	-	-	-	-	-	M16		3		

## INSERTS



JC8050



JC8118P